



Outline

1. Climate at Clements: understanding our challenges
2. Blended Learning
3. Instruction
4. Health Mitigation Plan
5. Discipline
6. Social Emotional Learning
7. Professional Development



Climate: understanding the challenges of our community

Dealing with COVID concerns and balancing Grace with learning goals

- Balancing workload with understanding

Developing connections through the virtual world

Cultivating empathy

Unique/new challenges with our condensed schedule

- Working at twice the pace in 2nd through 7th period
- 1st period has unique pacing from other classes and is therefore an additional prep for all



Blended Learning

To support virtual students and to make the most of our 1 to 1 initiative.



Google Classroom

The Zoom logo is shown inside a white rectangular box. It features the word "zoom" in a bold, blue, lowercase, sans-serif font.



Google Meet



Blended Learning

Teachers adapting and learning new techniques to reach struggling learners

Strategies:

- Flipped Classroom
- Assessment Analysis
- Use of breakout rooms in collaborative classrooms
- Utilizing chat features
- Google Classroom
- Zoom Meetings
- Monitoring engagement throughout virtual lessons using Nearpod, Socrative, etc.



Instruction

The new normal at
N. B. Clements





In-person, virtual, and hybrid classes

- Areas with a lower percentage of hybrid classes
 - Social studies
 - English
 - Science
 - Physical Education
 - Math
- Areas with a higher percentage of hybrid classes
 - Elective classes
 - Advanced classes
 - SPED
 - 1st period (given the number of students returning to in-person instruction in the 2nd semester)



The necessity of hybrid classes

Student A (in-person) needs the following courses:

- Honors Geometry
- Honors World History I
- English 9
- Honors Earth Science
- Choir (select ensemble 9)
- PE 9
- Digital Applications

Student B (in-person) needs the following courses:

- Honors Geometry
- Honors World History I
- English 9
- Honors Earth Science
- Theatre 1
- PE 9
- Digital Applications



The necessity of hybrid classes

Total requests in the school for those classes:

Honors Geometry	61
Honors World History I	133
English 9	348
Honors Earth Science	122
Choir (Select Ensemble 9)	20
PE 9	472
Digital Applications	164
Theatre 1	56



The necessity of hybrid classes

Class	Total requests	In-person	Virtual
Honors Geometry	61 (3)	34 (2)	27 (1)
Honors World History I	133 (5)	74 (3)	59 (3)
English 9	348 (14)	132 (6)	216 (9)
Honors Earth Science	122 (5)	68 (3)	54 (2)
Choir (Select Ensemble 9)	20 (1)	8 (1)	12 (1)
PE 9	472 (19)	208 (8)	264 (11)
Digital Applications	164 (7)	61 (3)	103 (4)
Theatre 1	56 (2)	31 (2)	25 (1)



The necessity of hybrid classes

A mini-master schedule (both indicates there are virtual and in-person sections):

	1st	2nd	3rd	4th	5th	6th	7th
Honors Geometry	Hybrid	Virtual	X	X	Hybrid	X	X
Honors World History I	In-person	Virtual	Hybrid	In-Person	In-Person	X	X
English 9	Both	PLC	Both	Both	PLC	Both	Both
Honors Earth Science	X	In-person	In-person	In-person	Hybrid	In-person	X
Choir (Select Ensemble 9)	Hybrid	X	X	X	X	Hybrid	X
PE 9	Both	Both	Both	Both	Both	Both	Both
Digital Applications	Hybrid	Both	X	X	Hybrid	X	X
Theatre 1	X	X	X	Hybrid	Hybrid	X	X



The necessity of hybrid classes

Student A potential schedules:

	1st	2nd	3rd	4th	5th	6th	7th
Honors Geometry	Hybrid	Virtual	X	X	Hybrid	X	X
Honors World History I	In-person	Virtual	Hybrid	In-Person	In-Person	X	X
English 9	Both	PLC	Both	Both	PLC	Both	Both
Honors Earth Science	X	In-person	In-person	In-person	Hybrid	In-person	X
Choir (Select Ensemble 9)	Hybrid	X	X	X	X	Hybrid	X
PE 9	Both	Both	Both	Both	Both	Both	Both
Digital Applications	Hybrid	Both	X	X	Hybrid	X	X

Student A might have to choose between choir and Geometry if not Hybrid.



The necessity of hybrid classes

Student B potential schedules:

	1st	2nd	3rd	4th	5th	6th	7th
Honors Geometry	Hybrid	Virtual	X	X	Hybrid	X	X
Honors World History I	In-person	Virtual	Hybrid	In-Person	In-Person	X	X
English 9	Both	PLC	Both	Both	PLC	Both	Both
Honors Earth Science	X	In-person	In-person	In-person	Hybrid	In-person	X
PE 9	Both	Both	Both	Both	Both	Both	Both
Digital Applications	Hybrid	Both	X	X	Hybrid	X	X
Theatre 1	X	X	X	Hybrid	Hybrid	X	X

Student B might have to choose between Theatre and Geometry if not hybrid.

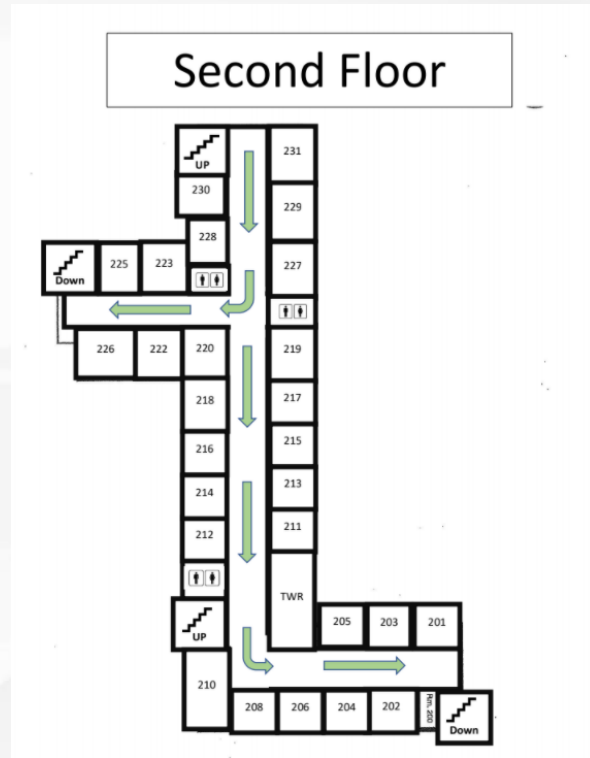
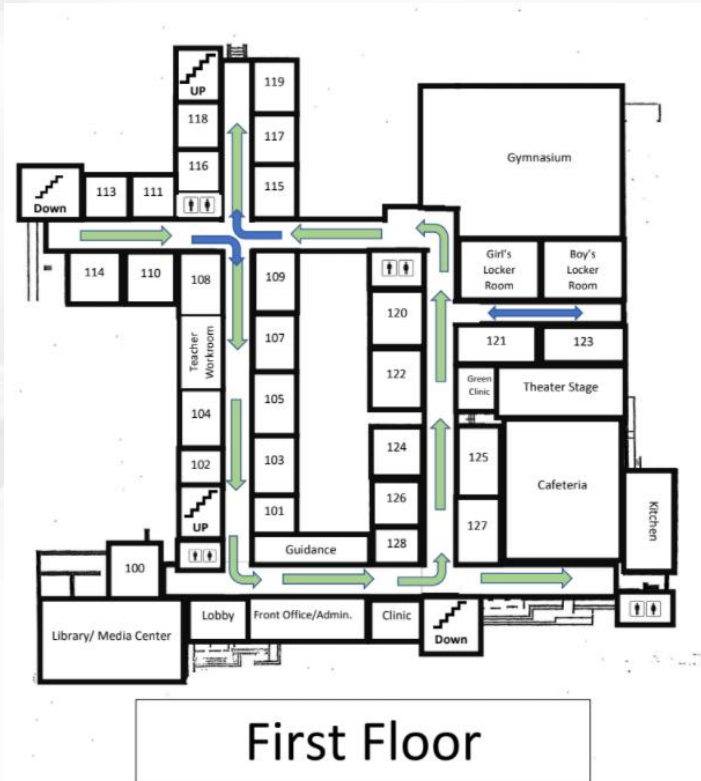


Health Mitigation Plan

What's working

- Cafeteria layout
- Hallway routes
- Staggered bell system
- Wearing masks at all times
- Cleaning classrooms
- Reading the Royal Pledge daily

Walking patterns and staggered dismissal





Discipline

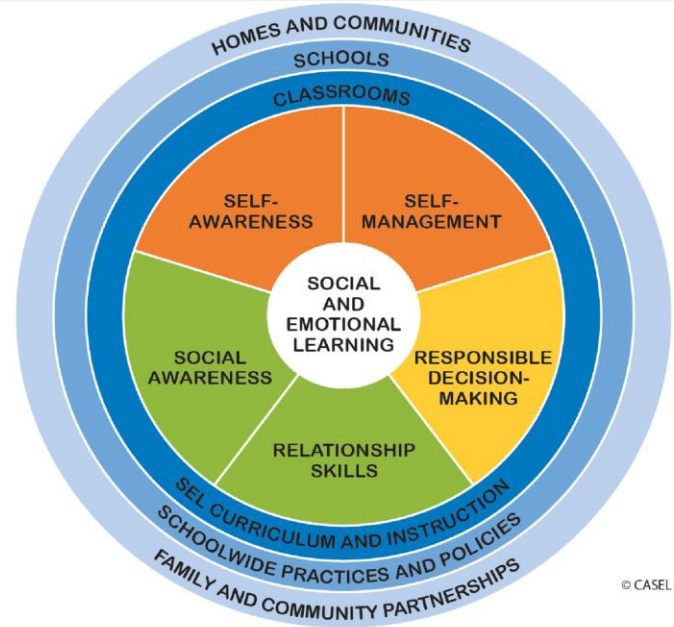
Restorative Practices

- Essay Writing
- Peer mediation
 - Compassionate Communication protocols
 - Mediation contracts
- Counseling sessions with students to emphasize appropriate behavior
 - In-school suspension
 - Lunch detention with Teachers/Admin

SEL

Social Emotional Learning

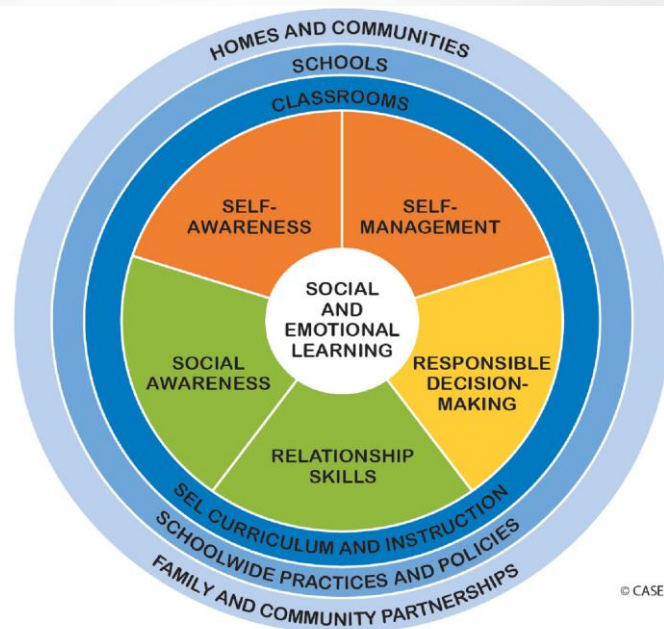
The Casel Model



Social Emotional Learning

SEL Team

- Began meeting in August 2020
- Members include representatives from Clements and Moore
- Teachers, counselors, administrators, our school psychologist, our school social worker, and parents are part of the core team
- Task based teams include
 - Staff SEL support
 - Student SEL support





Social Emotional Learning

Staff Training/support on SEL

- *Paper Tigers* and ACEs
- Fitness Fridays
- Faculty/staff SEL Groups
- Talent Show & Luncheon
- A Few of Your Favorite Things: December staff appreciation
 - Monday: we hope you enjoyed the hot beverages in Room 106.
 - Tuesday: "You are a cut above the rest"
 - Wednesday: "We will get things poppin'"
 - Thursday: "A few of your favorite things"
 - Friday: "We're bringin' the sauce"
- Weekly Check-ins and Follow-ups
- Shift from duty stations to "duty rounds"





Social Emotional Learning

Student Nearpod modules

- SEL time is built in to 5th period
- Students participate in a module during this time

Intro to SEL

SOCIAL EMOTIONAL LEARNING

Social Emotional Learning

Student Nearpod modules

- SEL time is built in to 5th period
- Students participate in a module during this time

The 5 Core Competencies



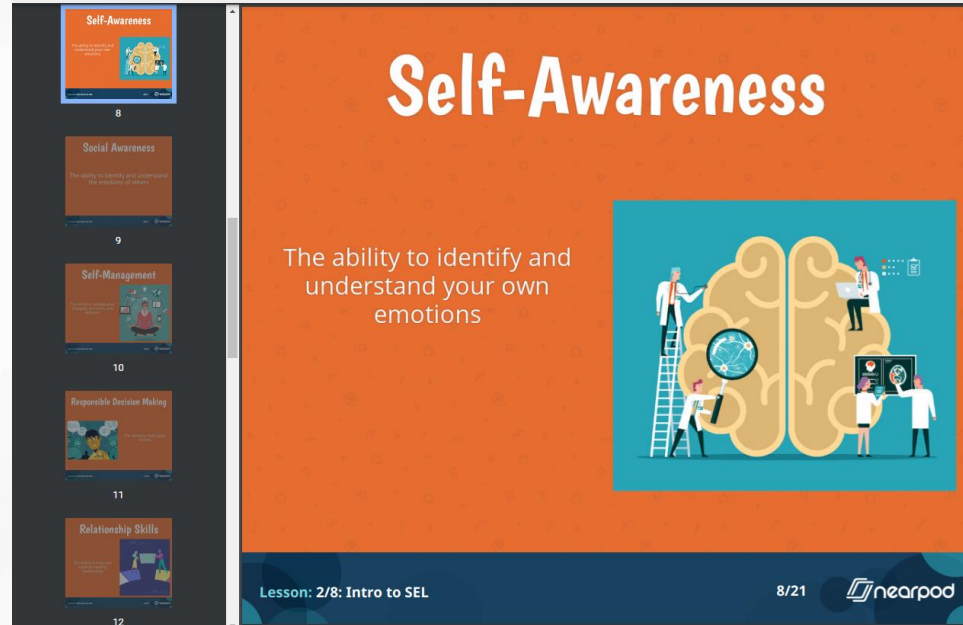
SEL consists of 5 core competencies:

Self-Awareness
Self-Management
Social Awareness
Relationship Skills
Responsible Decision-Making

Social Emotional Learning

Student Nearpod modules

- SEL time is built in to 5th period
- Students participate in a module during this time




The screenshot shows a presentation slide with an orange background. The title "Self-Awareness" is at the top in white. Below it, the text reads "The ability to identify and understand your own emotions". To the right is an illustration of a brain with several figures in white lab coats interacting with it: one on a ladder, one with a magnifying glass, one with a laptop, and one with a tablet. At the bottom, it says "Lesson: 2/8: Intro to SEL" and "8/21" next to the Nearpod logo.

Self-Awareness

The ability to identify and understand your own emotions

Lesson: 2/8: Intro to SEL

8/21 



Social Emotional Learning

Student Nearpod modules

- SEL time is built in to 5th period
- Students participate in a module during this time

Which core competency do you feel is currently your **STRONGEST**?

- Self-awareness
- Self-management
- Social awareness
- Responsible decision making
- Relationship skills



Professional Development

All Teachers are Reading Teachers

Virtual Classroom Management

- Two-factor verification
- Zoom vs. Google Meet

Write Like This Book Study

Assessment Leadership Team

Virtual/Hybrid Roundtable Discussion

SEL



Extension Program

3 Tiers of Support:

- 1) Make-up Track
- 2) Mastery Track
- 3) Synchronous Track

Fridays - 4 weeks

Total school investment and implementation



Successes

Return to normalcy

- PE activities, science labs, CTE labs, socializing in the lunchroom

Extracurricular

- Yearbook: posting virtual and in-person experiences
- DECA: hat day and candy gram fundraisers and canned food drives
- Beta: has won multiple awards and continues to compete in competitions
 - “Lead outside the box” national qualifier
 - “Rapid response” national qualifier

Counseling services are returning (TDT, Boys to Men, MFLAC, etc.)

Academic Achievement

- 222 8th graders on the A/B Honor Roll
- 202 9th graders on the A/B Honor Roll